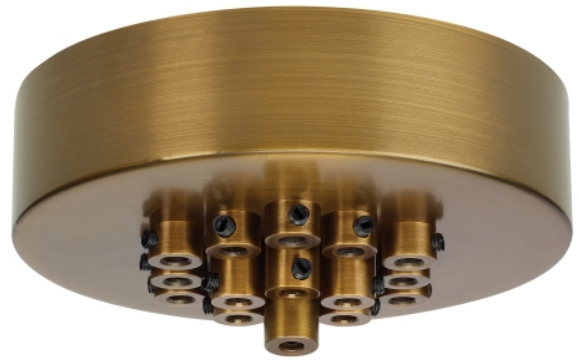


## PRODUCT FEATURES

- Customizable canopy helps create unique chandeliers for any space
- Clean and simple design
- Square, 7-Port and 11-Port canopies also available by Tech Lighting
- Available in modern finish options
- Ideal for residential and commercial lighting applications
- Protected by a 1-year warranty



## LAMPING

Aged Brass



Satin Nickel

Aged Brass

## ORDERING INFORMATION

### 700TDMRD19T FINISH

- R AGED BRASS
- S SATIN NICKEL

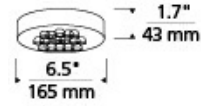
700TDMRD19T \_\_\_\_\_

JOB NAME \_\_\_\_\_

NOTES \_\_\_\_\_



## SPECIFICATIONS



PRIMARY MATERIAL	Metal
SHADE MATERIAL	
NET WEIGHT	15 lbs
HEIGHT	1.7in
WIDTH	6.5in
LENGTH	6.5in
WET LISTED	
DAMP LISTED	Yes
DRY LISTED	
GENERAL LISTING	ETL Listed
INCLUDES	

## LAMPING SPECIFICATIONS

	LED LAMP	INTEGRATED LED	NON LED	NO LAMP
DELIVERED LUMENS				
WATTS				
MAX WATTAGE PER BULB				
INPUT VOLTAGE/ DIMMING TYPE			120V ELV	
CCT				
CRI				
LED LIFETIME				
L70				
AVERAGE BULB HOURS				
FIELD SERVICEABLE LED				
LAMP BASE				
LAMP SHAPE				
LAMP INCLUDED?				
WARRANTY**			1 Year	

\* Dimming information available at [www.techlighting.com/Downloads#dimming](http://www.techlighting.com/Downloads#dimming)  
 \*\* Visit [techlighting.com](http://techlighting.com) for specific warranty limitations and details.

## T20 / T24 / JA8 INFORMATION

	Integrated LED	Replacement LED Lamp	No Lamp *
This product can be used to comply with California Building Energy Efficiency Standards 2016 <b>Title 24</b> Part 6 / JA8.			N/A
This product can be used to comply with California Appliance Efficiency Standards 2016 <b>Title 20</b> and may be shipped to and sold in California.			N/A

\* If a light fixture or component does not include a lamp or light source, it is the responsibility of the customer to select a lamp that meets the T24 and T20 requirements.

