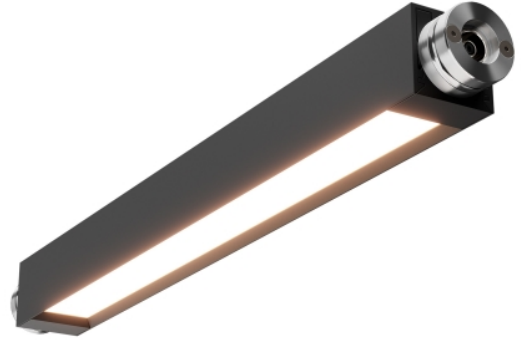


PRODUCT FEATURES

- Available in Nightshade Black Finish
- 100 lumens per foot
- Connect Light Bars together with Brox Connectors
- Light Bars rotate 360 degrees to aim light in your preferred direction
- Finish each run with an End Cap



LAMPING

2 watts per foot, 100+ lumens per foot, 90 CRI 3000K. Surface. 120V-277V ELV and forward phase. Remote. 120V ELV and forward phase. 120V-277V 0-10V.

Black 12



Black 12

Black 48

ORDERING INFORMATION

700BRXLB	SHAPE OR SIZE	CRI	COLOR TEMP	FINISH
	12 12	L9 90 CRI	30 3000K	B NIGHTSHADE BLACK
	24 24			
	48 48			
	72 72			
	96 96			

700BRXLB _____

JOB NAME _____

NOTES _____



BROX LIGHT BARS

SPECIFICATIONS

HARDWARE MATERIAL	Aluminum
SHADE MATERIAL	Aluminum
NET WEIGHT	0.5 lbs
HEIGHT	1in
WIDTH	1in
LENGTH	10.8in
WET LISTED	
DAMP LISTED	Yes
DRY LISTED	
GENERAL LISTING	ETL Listed
INCLUDES	



LAMPING SPECIFICATIONS

	LED LAMP	INTEGRATED LED	NON LED	NO LAMP
DELIVERED LUMENS		100 lms ft		
		2		
		4		
WATTS		8		
		12		
		16		
MAX WATTAGE PER BULB		2W		
INPUT VOLTAGE				
DIMMING TYPE*		0-10, ELV, TRIAC		
CCT		3000K		
CRI		90 CRI		
LED LIFETIME				
L70				
AVERAGE BULB HOURS				
FIELD SERVICEABLE LED				
LAMP BASE		Integrated LED		
LAMP SHAPE		Integrated LED		
LAMP INCLUDED?		True		
WARRANTY**		5 Years		

* Dimming information available at www.techlighting.com/Downloads#dimming

** Visit techlighting.com for specific warranty limitations and details.

T20 / T24 / JA8 INFORMATION

	Integrated LED	Replacement LED Lamp	No Lamp *
This product can be used to comply with California Building Energy Efficiency Standards 2016 Title 24 Part 6 / JA8 .	Yes		
This product can be used to comply with California Appliance Efficiency Standards 2016 Title 20 and may be shipped to and sold in California.	N/A		

* If a light fixture or component does not include a lamp or light source, it is the responsibility of the customer to select a lamp that meets the T24 and T20 requirements.

