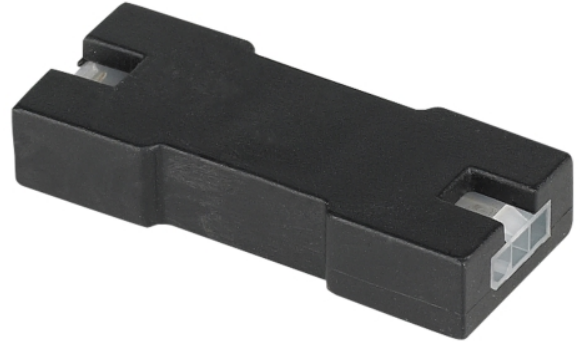


## PRODUCT FEATURES



## LAMPING

Unilume LED Slimline Female To Female Connector



Unilume LED  
Slimline Female To  
Female Connector

## ORDERING INFORMATION

700UCFFC FINISH

- B BLACK
- W WHITE

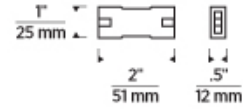
700UCFFC \_\_\_\_\_

JOB NAME \_\_\_\_\_

NOTES \_\_\_\_\_



## SPECIFICATIONS



|                  |            |
|------------------|------------|
| PRIMARY MATERIAL |            |
| SHADE MATERIAL   |            |
| NET WEIGHT       |            |
| HEIGHT           | 0.5in      |
| WIDTH            | 0.5in      |
| LENGTH           | 0.5in      |
| WET LISTED       |            |
| DAMP LISTED      |            |
| DRY LISTED       |            |
| GENERAL LISTING  | ETL Listed |
| INCLUDES         |            |

## LAMPING SPECIFICATIONS

|                             | LED LAMP | INTEGRATED LED | NON LED | NO LAMP |
|-----------------------------|----------|----------------|---------|---------|
| DELIVERED LUMENS            |          |                |         |         |
| WATTS                       |          |                |         |         |
| MAX WATTAGE PER BULB        |          |                |         |         |
| INPUT VOLTAGE/ DIMMING TYPE |          |                |         |         |
| CCT                         |          |                |         |         |
| CRI                         |          |                |         |         |
| LED LIFETIME                |          |                |         |         |
| L70                         |          |                |         |         |
| AVERAGE BULB HOURS          |          |                |         |         |
| FIELD SERVICEABLE LED       |          |                |         |         |
| LAMP BASE                   |          |                |         |         |
| LAMP SHAPE                  |          |                |         |         |
| LAMP INCLUDED?              |          |                |         |         |
| WARRANTY**                  |          |                | 1 Year  |         |

\* Dimming information available at [www.techlighting.com/Downloads#dimming](http://www.techlighting.com/Downloads#dimming)  
 \*\* Visit [techlighting.com](http://techlighting.com) for specific warranty limitations and details.

## T20 / T24 / JA8 INFORMATION

|  | Integrated LED | Replacement LED Lamp | No Lamp * |
|--|----------------|----------------------|-----------|
| This product can be used to comply with California Building Energy Efficiency Standards 2016 <b>Title 24</b> Part 6 / JA8.                           |                |                      | N/A       |
| This product can be used to comply with California Appliance Efficiency Standards 2016 <b>Title 20</b> and may be shipped to and sold in California. |                |                      | N/A       |

\* If a light fixture or component does not include a lamp or light source, it is the responsibility of the customer to select a lamp that meets the T24 and T20 requirements.

