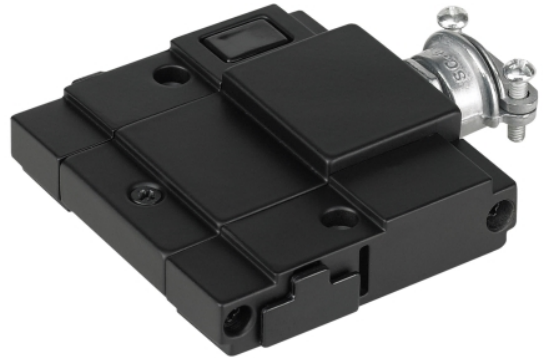


UNILUME LED SLIMLINE SPLICE BOX

PRODUCT FEATURES



LAMPING

The 1" Jumper Connector can be used to place the Splice Box next to the Unilume LED Slimline Housing or a longer Unilume LED Slimline Jumper Connector can be used to place the Splice Box in a more convenient or remote location. Includes Romex / 1/2 inch conduit connector.

Unilume LED Slimline Splice Box



Unilume LED
Slimline Splice Box

ORDERING INFORMATION

700UCSB FINISH

B BLACK
W WHITE

700UCSB _____

JOB NAME _____

NOTES _____

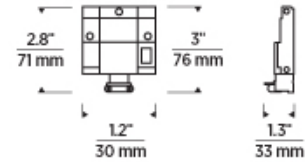


UNILUME LED SLIMLINE SPLICE BOX



SPECIFICATIONS

PRIMARY MATERIAL	
SHADE MATERIAL	
NET WEIGHT	
HEIGHT	0.85in
WIDTH	2.8in
LENGTH	2.8in
WET LISTED	
DAMP LISTED	
DRY LISTED	
GENERAL LISTING	ETL Listed
INCLUDES	



LAMPING SPECIFICATIONS

	LED LAMP	INTEGRATED LED	NON LED	NO LAMP
DELIVERED LUMENS				
WATTS				
MAX WATTAGE PER BULB				
INPUT VOLTAGE/ DIMMING TYPE				
CCT				
CRI				
LED LIFETIME				
L70				
AVERAGE BULB HOURS				
FIELD SERVICEABLE LED				
LAMP BASE				
LAMP SHAPE				
LAMP INCLUDED?				
WARRANTY**			1 Year	

* Dimming information available at www.techlighting.com/Downloads#dimming
 ** Visit techlighting.com for specific warranty limitations and details.

T20 / T24 / JA8 INFORMATION

	Integrated LED	Replacement LED Lamp	No Lamp *
This product can be used to comply with California Building Energy Efficiency Standards 2016 Title 24 Part 6 / JA8.			N/A
This product can be used to comply with California Appliance Efficiency Standards 2016 Title 20 and may be shipped to and sold in California.			N/A

* If a light fixture or component does not include a lamp or light source, it is the responsibility of the customer to select a lamp that meets the T24 and T20 requirements.

