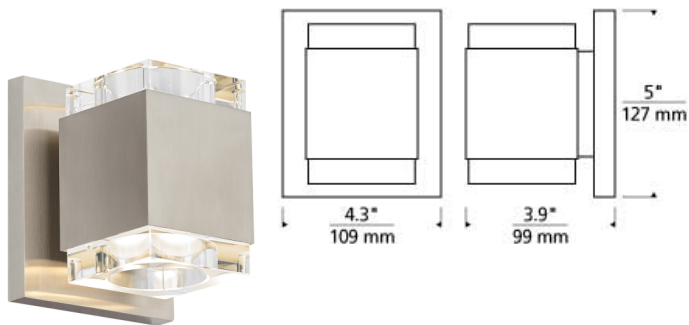


# WALL COLLECTION

## Voto Wall Square LED ADA T20

### DESCRIPTION

The Voto light by Tech Lighting is simply elegant with its handsome well-defined shape crafted from die-cast metal, its bold design is echoed by symmetrical reveals cut from a solid piece of optically pure crystal. A surplus of light radiates from the top and bottom of the thick-cut crystal. The Voto is available in two distinct shapes square and round and features two contemporary glass colors, clear and smoke. For even greater design freedom the Voto can be mounted vertically or horizontally and is available in four on-trend hardware finishes. Your choice of fully dimmable LED lamping ships with the Voto saving you both time and money. Includes 9 watt, 560 net lumen, 3000K LED module. Dimmable with low-voltage electronic dimmer. May be mounted horizontally or vertically. ADA compliant.



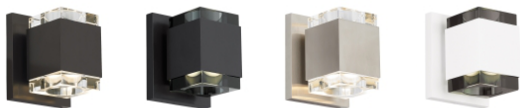
smoke

### INSTALLATION

This product can mount to either a 4" square electrical box with round plaster ring or an octagonal electrical box (not included).

### WEIGHT

2.5-3lb / 1.13-1.36kg ±



antique bronze

black

satin nickel

white

### ORDERING INFORMATION

700WSVOTS COLOR	FINISH	LAMP
C CLEAR	Z ANTIQUE BRONZE	-LED830 LED 80 CRI 3000K 120V
K SMOKE	B BLACK	-LED830-277 LED 80 CRI 3000K 277V
	S SATIN NICKEL	
	W WHITE	



Tech Lighting, L.L.C.

700WSVOTS \_\_\_\_\_

FIXTURE TYPE: \_\_\_\_\_

JOB NAME: \_\_\_\_\_

NOTES: \_\_\_\_\_

\_\_\_\_\_

\_\_\_\_\_