

The Turbo outdoor LED path light features a clean, cylindrical silhouette highlighted with decorative fins evenly spaced around the circumference which create beautiful geometric shadows when illuminated by the powerful LED light source shining down from the crown.

High quality LM80-tested LEDs

for consistent long-life performance and color

Outstanding protection against the elements:

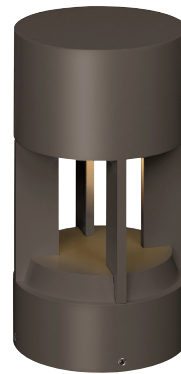
- Marine-grade powder coat finishes
- Stainless Steel mounting hardware
- Impact-resistant, UV stabilized frosted acrylic lensing

Bolt or Stake mounting options

SPECIFICATIONS

DELIVERED LUMENS	1053
WATTS	16.3
VOLTAGE	12V (Transformer sold separately)
DIMMING	MLV
LIGHT DISTRIBUTION	Symmetric
MOUNTING OPTIONS	Bolt or Stake
CCT	3000K
CRI	80
COLOR BINNING	3 Step
BUG RATING	B1-U0-G0
DARK SKY	Compliant
WET LISTED	IP65
GENERAL LISTING	ETL, Title 24
START TEMP	-30°C
FIELD SERVICEABLE LED	Yes
CONSTRUCTION	Aluminum
HARDWARE	Stainless Steel
FINISH	Marine Grade Powder Coat
LED LIFETIME	L70; 70,000 Hours
WARRANTY*	5 Years

* Visit techlighting.com for specific warranty limitations and details.



TURBO PATH
shown in bronze



TURBO PATH
shown in charcoal

TRANSFORMERS*

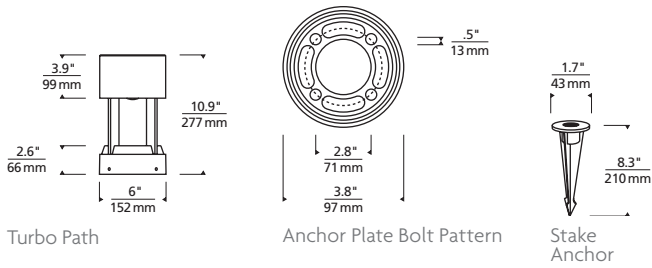
(OUTDOOR RATED, ORDERED SEPARATELY)

ITEM	DESCRIPTION	HOUSING	DIMMING
7000T150T	OTDR, MAGNETIC, 150W, 120V	STAINLESS STEEL	MAGNETIC
7000T150T277	OTDR, MAGNETIC, 150W, 277V	STAINLESS STEEL	MAGNETIC
7000T300T	OTDR, MAGNETIC, 300W, 120V	STAINLESS STEEL	MAGNETIC
7000T300T277	OTDR, MAGNETIC, 300W, 277V	STAINLESS STEEL	MAGNETIC

ORDERING INFORMATION

7000ATUR	CRI/CCT	LENGTH	LENS	FINISH	DISTRIBUTION	OPTIONS
830	80 CRI, 3000K	12" 12"	D DIFFUSE	Z BRONZE H CHARCOAL	S SYMMETRIC	NONE ST STAKE MOUNTING KIT

*REQUIRES 12V REMOTE TRANSFORMER

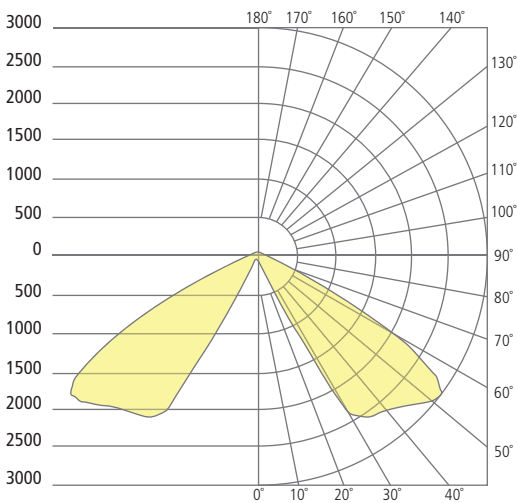


PHOTOMETRICS*

*For latest photometrics, please visit www.techlighting.com/OUTDOOR

TURBO PATH 20°

- Total Lumen Output: 1053
- Total Power: 16.3
- Luminaire Efficacy: 64.4
- Color Temp: 3000K
- CRI: 80+
- BUG Rating: B1-U0-G0



PROJECT INFO

FIXTURE TYPE & QUANTITY	JOB NAME & INFO	NOTES