



# GATICA

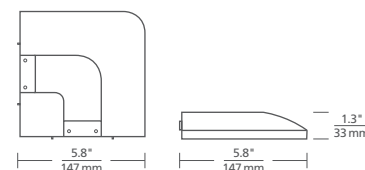
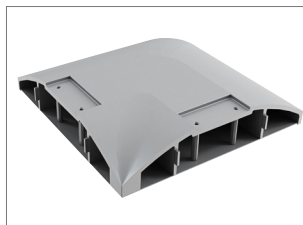
GENERAL AND TASK ILLUMINATION, CONTROLS, ADJUSTABILITY

## ORDERING GRID

GCO	SIZE	TYPE	MOUNTING	FINISH
06	6" WIDE	L L T T X X	SR04 48" RIGID STEM SR08 96" RIGID STEM SA04 48" ADJUSTABLE CABLE SA12 144" ADJUSTABLE CABLE	S SILVER W WHITE XXX CUSTOM RAL

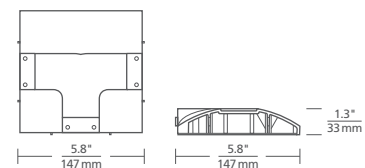
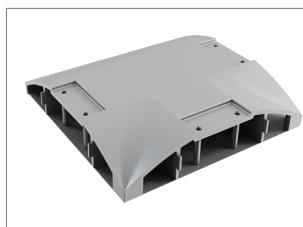
### L CONNECTOR

USED TO FORM A 90° ANGLE WITHIN A GATICA SYSTEM RUN. INCLUDES 1 ADDITIONAL SUSPENSION MOUNT AND ALL NECESSARY MOUNTING HARDWARE. ONLY AVAILABLE FOR 6" WIDE SUSPENSION SYSTEMS AT THIS TIME.



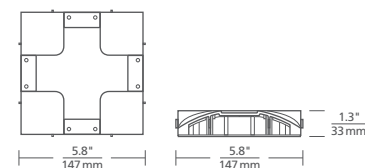
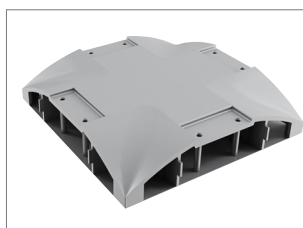
### T CONNECTOR

USED TO EXTEND A PERPENDICULAR RUN FROM AN EXISTING GATICA SYSTEM RUN BY CONNECTING 3 PANELS OR SPOTS TO FORM A SLEEK T INTERSECTION. INCLUDES 2 ADDITIONAL SUSPENSION MOUNTS, 1 ADDITIONAL ENDCAP AND ALL NECESSARY MOUNTING HARDWARE. ONLY AVAILABLE FOR 6" WIDE SUSPENSION SYSTEMS AT THIS TIME.



### X CONNECTOR

USED TO EXTEND 2 PERPENDICULAR RUNS FROM AN EXISTING GATICA SYSTEM RUN BY CONNECTING 4 PANELS OR SPOTS TO FORM A SLEEK X INTERSECTION. INCLUDES 3 ADDITIONAL SUSPENSION MOUNTS, 2 ADDITIONAL ENDCAPS AND ALL NECESSARY MOUNTING HARDWARE. ONLY AVAILABLE FOR 6" WIDE SUSPENSION SYSTEMS AT THIS TIME.



For additional information and support including sample room layouts, bill of materials configuration, inquiries on custom capabilities, IES/REVIT files, product images and application environments, please visit [www.techlighting.com/GATICA](http://www.techlighting.com/GATICA).



Tech Lighting reserves the right to discontinue or to change the technical or design specifications of its products at any time without notice. Copyright 2015 Tech Lighting. Tech Lighting and GATICA are registered trademarks of Tech Lighting. All rights reserved. A Generation Brands Company.

FIXTURE TYPE \_\_\_\_\_

FIXTURE QUANTITY \_\_\_\_\_

JOB NAME \_\_\_\_\_

NOTES \_\_\_\_\_