

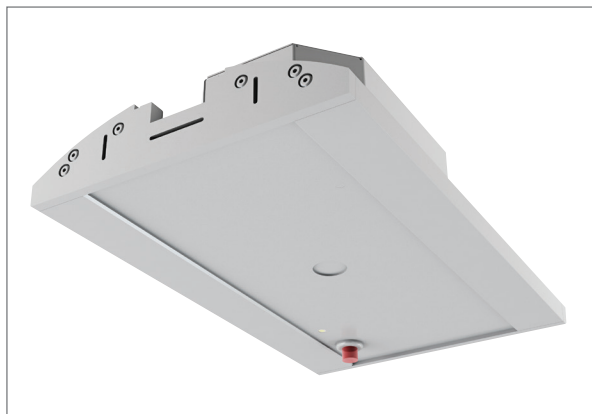


# GATICA

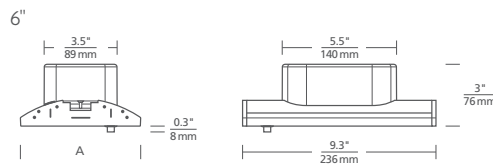
GENERAL AND TASK ILLUMINATION, CONTROLS, ADJUSTABILITY

## EMERGENCY BACKUP MODULE

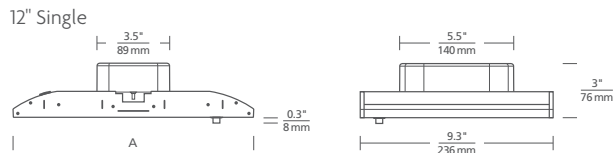
TO HELP COMPLY WITH STATE BUILDING AND FIRE CODES, INSURANCE STANDARDS, AND OSHA STANDARDS, THE OPTIONAL EMERGENCY BACKUP MODULE USES AN ULTRA BRIGHT, 5000K LED MODULE CAPABLE OF GENERATING 795 LUMENS THROUGH A WIDE-ANGLE 120° OPTIC FOR UP TO 90 MINUTES ON BATTERY POWER. ITS EFFICIENT NiCd BATTERY MINIMIZES ITS PROFILE TO MAINTAIN A SLEEK AESTHETIC IN SUSPENDED SYSTEMS.



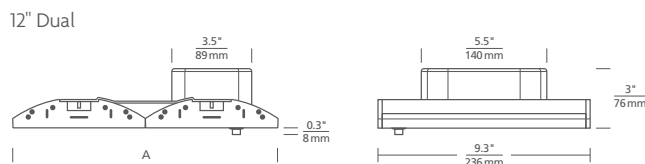
## EMERGENCY BACKUP MODULE



WIDTH (A)  
 Suspended | 5.8" / 147mm  
 Recessed | 6.3" / 160mm  
 Lay-In | 5.8" / 147mm



WIDTH (A)  
 Suspended | 11.6" / 295mm  
 Recessed | 12.1" / 307mm  
 Lay-In | 11.6" / 295mm



WIDTH (A)  
 Suspended | 11.6" / 295mm  
 Recessed | 12.1" / 307mm  
 Lay-In | 11.6" / 295mm

## ORDERING GRID

GEM	SIZE	OUTPUT	MOUNTING	FINISH	CONTROLS
06	6" WIDE	A1 795 LUMENS	SR04 48" RIGID STEM	S SILVER	0 0-10V
12	12" WIDE		SR08 96" RIGID STEM	W WHITE	
12D	12" WIDE DUAL		SA04 48" ADJUSTABLE CABLE	XXX CUSTOM RAL	
			SA12 144" ADJUSTABLE CABLE		
			R RECESSED		
			LI LAY IN (T-GRID)		

For additional information and support including sample room layouts, bill of materials configuration, inquiries on custom capabilities, IES/REVIT files, product images and application environments, please visit [www.techlighting.com/GATICA](http://www.techlighting.com/GATICA).



Tech Lighting reserves the right to discontinue or to change the technical or design specifications of its products at any time without notice. Copyright 2015 Tech Lighting. Tech Lighting and GATICA are registered trademarks of Tech Lighting. All rights reserved. A Generation Brands Company.



FIXTURE TYPE \_\_\_\_\_

FIXTURE QUANTITY \_\_\_\_\_

JOB NAME \_\_\_\_\_

NOTES \_\_\_\_\_