

# Kenton Wall

700WSKEN

1.0



## GENERAL PRODUCT INFORMATION:

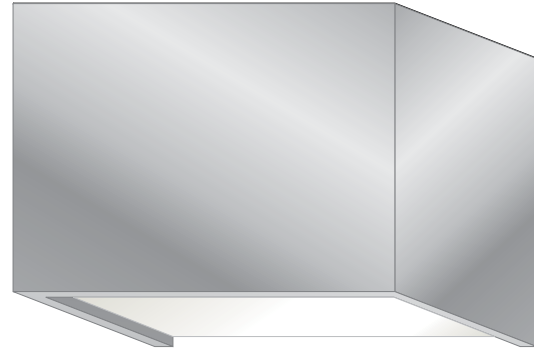
This fixture is intended to be installed utilizing NEC compliant junction boxes.



This product is suitable for damp locations.

This product can be dimmed with a low-voltage electronic dimmer.

This instruction shows a typical installation.

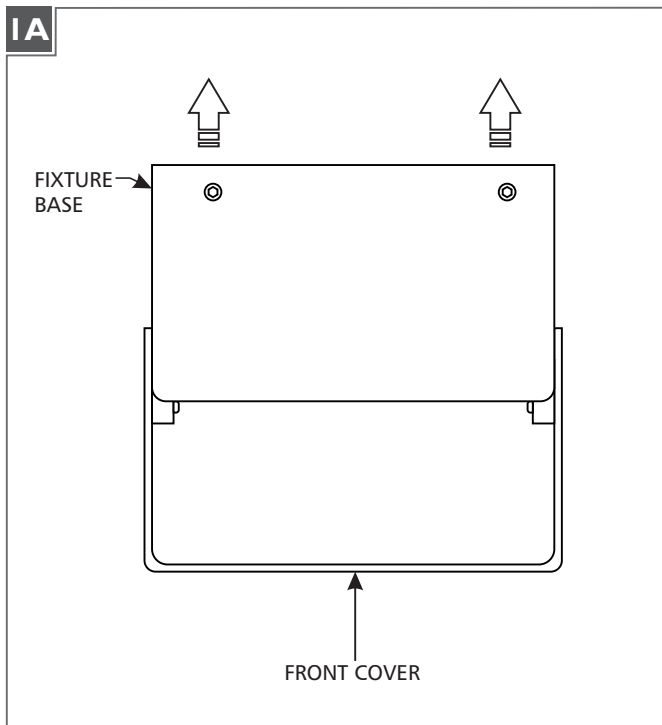


### CAUTION - RISK OF FIRE

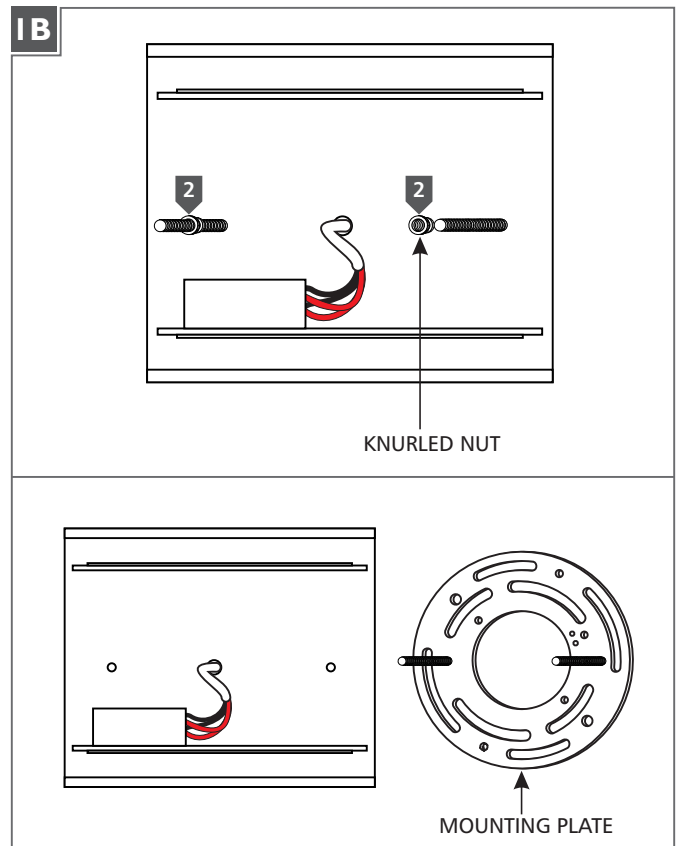
This product must be installed in accordance with the applicable installation code by a person familiar with the construction and operation of the product and the hazards involved.

Use minimum 90°C supply conductors.

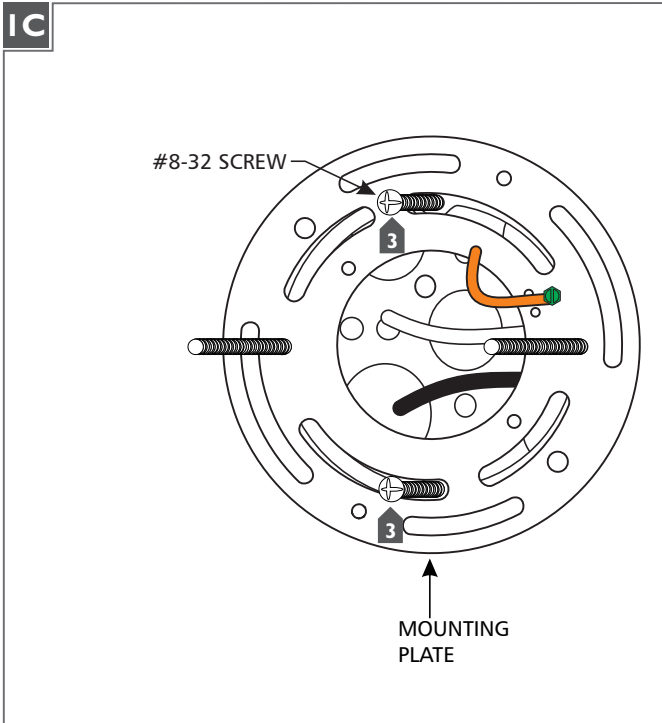
## Install the Fixture



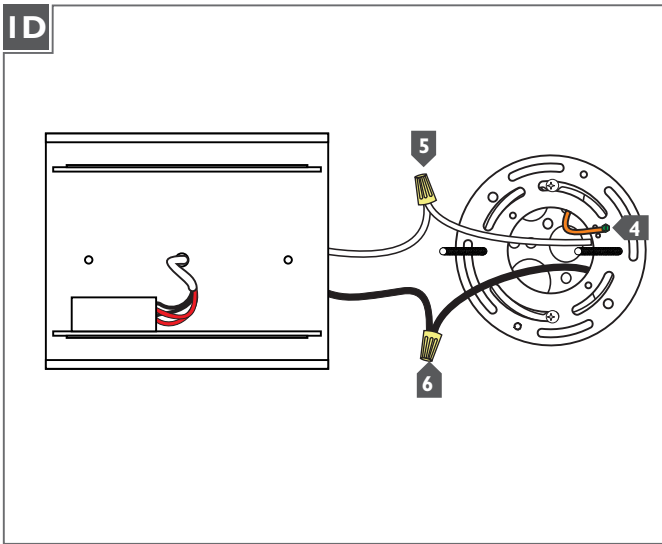
**1** Firmly hold the fixture base and evenly pull the front cover straight off.



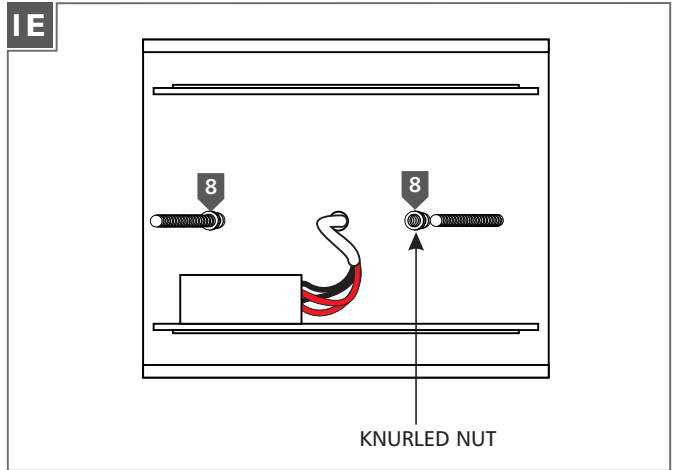
**2** Remove the two knurled nuts and separate the mounting plate from the fixture.



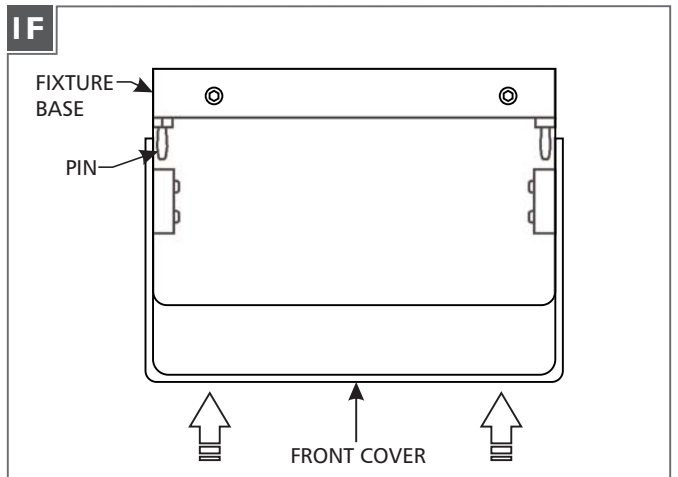
**3** Attach the mounting plate to the electrical box using the two #8-32 screws provided.



- 4** Connect the fixture to a suitable ground according to local electrical codes.
- 5** Connect the white fixture wire to the neutral power line wire with a wire nut.
- 6** Connect the black fixture wire to the hot power line wire with a wire nut.



- 7** Properly place all wires and wire nut connections in the electrical box.
- 8** Mount the fixture onto the mounting plate and secure it tightly with the two knurled nuts.



**9** Align the pins on the fixture to holes on the shade and push the shade to re-install it.

**SAVE THESE INSTRUCTIONS!**



7400 Linder Ave, Skokie, IL 60077  
847.410.4400

[www.techlighting.com](http://www.techlighting.com)

© 2018 Tech Lighting, L.L.C. All rights reserved. The "Tech Lighting" graphic is a registered trademark of Tech Lighting, L.L.C. Tech Lighting reserves the right to change specifications for product improvements without notification.

A Generation Brands Company